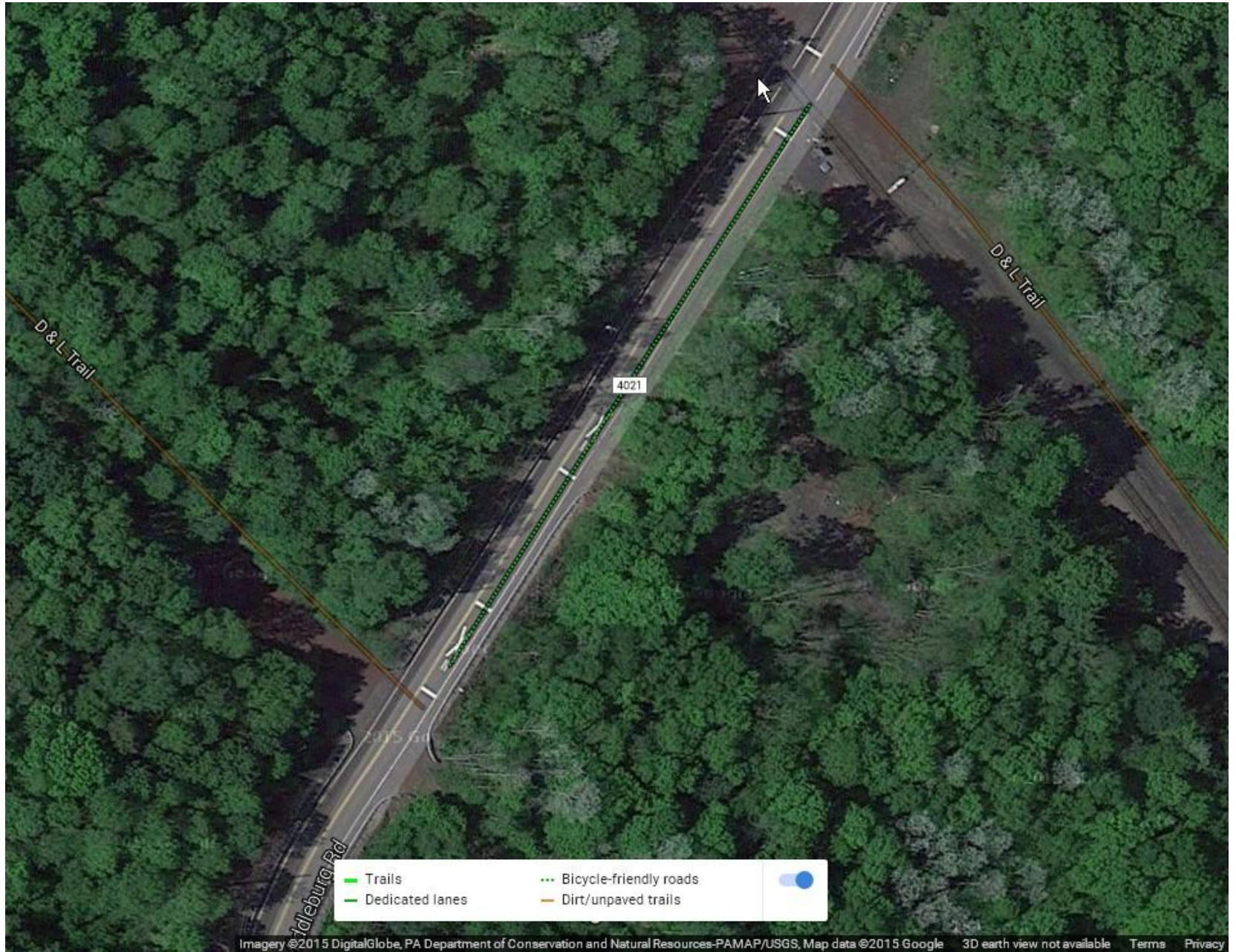


## Glen Summit – D&L Black Diamond Trail to White Haven – Road Crossing Directions

At around the 9<sup>th</sup> mile south of the Black Diamond trailhead you will intersect with Middleburg Road. Here you will turn left and head East for approx. 100 yards/meters towards the railroad tracks. Then turn right once you cross over the tracks heading South back onto the trail into the Lehigh Gorge State Park on the last “least maintained” 1 mile section.



GPS: [PoconoBikeRental.com](http://PoconoBikeRental.com) 322 Main Street White Haven, PA 18661 p. 570-899-5025



**The view  
East on  
Middleburg  
Road looking  
toward the  
right turn  
South onto  
the trail.**

This road is trafficked not only by cyclists but by fast moving motorcycles, cars, SUVs' and Trucks of all sizes. Please be careful riding on this section of the road and do so with caution and maintaining proper distances and protocols for hand signaling etc.



**GPS: [PoconoBikeRental.com](https://www.pocnobikerental.com) 322 Main Street White Haven, PA 18661 p. 570-899-5025**



**Up ahead on the right just over the railroad tracks you will make a right hand turn back onto the trail.**

Be careful on this section of roadway, listen for vehicular traffic and pull off the side of the road if you have to. In order to feel safe.



**GPS: [PoconoBikeRental.com](https://www.poconobikerental.com) 322 Main Street White Haven, PA 18661 p. 570-899-5025**



**After going over the railroad tracks, head diagonally right on to the path around the access gate.**

Here you will be on a short single track along the railroad tracks for 100 feet or so and then you will be entering the Lehigh Gorge State Park area of the trail. You will bike alongside the mighty Lehigh River on your left as you get further along the trail.



**GPS: [PoconoBikeRental.com](http://PoconoBikeRental.com) 322 Main Street White Haven, PA 18661 p. 570-899-5025**